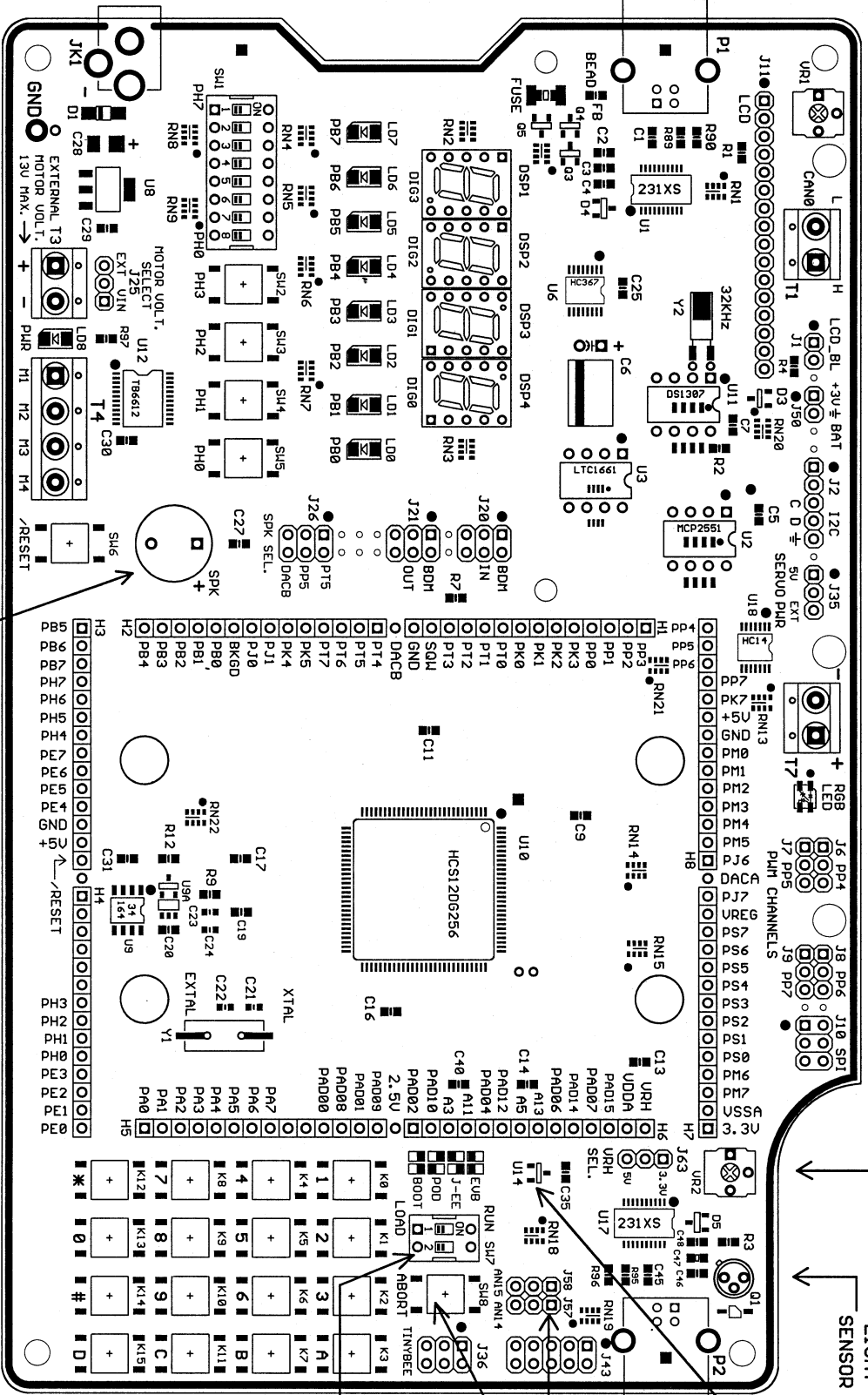


- EXT. 3V FOR RTC
- LCD CONTRAST ADJUST
- CAN0 BACK LIGHT ENABLE
- I<sup>2</sup>C INTERFACE FOR SERVOS
- EXTERNAL 5V FOR SERVOS
- RGB LED
- 4 SERVO OUTPUTS
- SPI INTERFACE
- POTENTIOMETER
- SENSOR LIGHT

- 9V DC 0.5A 2.1MM JACK CENTER POSITIVE
- EXT. MOTOR VOLTAGE 15V MAX. INDICATOR
- POWER ON H-BRIDGE OUTPUTS
- SPEAKER
- RESET SWITCH



- DRAGON12-LIGHT 1175-A SILKSCREEN
- 4X4 KEYPAD
- MODE SELECT
- ACCELEROMETER
- X-Y-Z SWITCH
- ABORT
- TWO ANALOG SENSORS
- TTL
- SC11
- TEMP. SENSOR
- USB